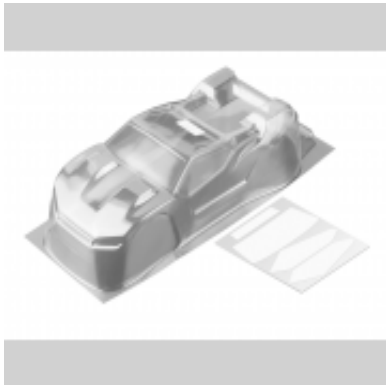


Dane aktualne na dzień: 31-01-2026 20:01

Link do produktu: <https://sklep.titanrc.pl/xray-329705-body-110-2wd-stadium-truck-fr-shock-position-lightweight-p-3643.html>



## XRAY 329705 Body 1/10 2WD Stadium Truck - F/R Shock POSITION - Lightweight

Cena brutto	<b>170,91 zł</b>
Cena netto	<b>138,96 zł</b>
Dostępność	<b>Na zamówienie</b>
Numer katalogowy	<b>329705</b>
Kod producenta	<b>329705</b>
Kod EAN	<b>8581703297055</b>
Producent	<b>XRAY Racing</b>

### Opis produktu

**Redesigned XT2 body allow shock absorbers to be mounted either frontwards or rearwards. Provides maximum downforce with lowest possible CG to avoid chassis roll. The high-performance aerodynamic body with high-downforce areas for proper airflow was designed by XRAY to perfectly fit the XT2 and work in most track conditions. The body is made from high-quality premium Lexan™ material.**

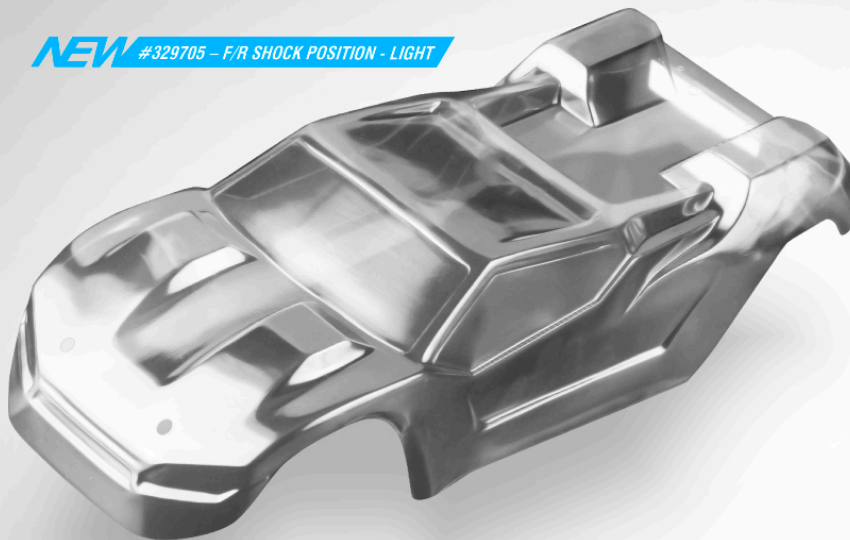
**Effective rear wing was designed to work perfectly with the XRAY XT2 body. Made from strong Lexan™ material, the wing is supported on wing mounts by extra flat shims to better support and extend the life of the wing.**

#329705 • #323520 • #323521  
BODY 1/10 2WD STADIUM TRUCK – LIGHT + EXTRA STRONG REAR WINGS

**XRAY XT2**

**ULTRA-LIGHTWEIGHT HIGH-PERFORMANCE** FOR FRONT OR REAR SHOCK POSITION  
**LOW-PROFILE SUPER-SMOOTH AIRFLOW**

**NEW** #329705 – F/R SHOCK POSITION - LIGHT



XRAY Body for XT2

#329704	1.0mm	F/R Shock Position
#329705	0.75mm	F/R Shock Position - Light

**OPTIONAL WINGS WITH DIFFERENT DOWNFORCE**  
**EXTRA STRONG**

INCREASES DOWNFORCE



**NEW** #323520 – HIGH DOWNFORCE

DECREASES DOWNFORCE



**NEW** #323521 – LOW DOWNFORCE